



Preservation Post

Newsletter of the Christ Church
Preservation Society (Inc.)

Issue 83 – April 2025

Upcoming Events:

Church of Tonga Service – Every Sunday

Annual Service – 2.00 pm Sunday 25 May

From the President

Since the last issue of Preservation Post there have been several events we can report on, starting with the **Annual General Meeting held at the church on Sunday 13 October. A copy of the draft minutes is attached.**

It has been suggested that, as so many of our members live outside Wellington, we should hold general meetings online. If you have any thoughts about this, I would be pleased to hear from you.

Once again, we were unable to elect a treasurer, although I'm very happy to be able to report that Margaret Hutchings has since taken on this task. At our committee meeting on 22 February, she was appointed to fill the vacancy, and it was agreed that we would adopt the xero accounting system, available to charities at a discounted rate. Margaret has since installed the system and brought the accounts up to date so that we should have the year-end draft accounts available by early May.

A feature of our accounts this past year will be the considerable cost we are incurring to maintain the fire security system, including over \$6000 for replacement of part of the control system.

However, we are very grateful to have received advice of a **bequest of \$50,000 from the late Peter Avery**, who was a long time supporter of the Society.

We still need a secretary. With several of the tasks previously having been undertaken by the secretary now handled by committee members and other volunteers, this should not be an onerous undertaking. **Please contact me if you would like a job description or to discuss your possible involvement.**



The **February committee meeting** was held in conjunction with a working bee, with several of our committee and other volunteers having a very productive morning, followed by a shared lunch enjoyed on a beautiful day. At the meeting the committee agreed that the **allocation of \$10,000** of the Society's funds previously approved for the visitor centre project would be **spent on extending the existing courtyard around the new building.** We also agreed to some adjustment of the junction with the old courtyard. A contract has been let for this work, and we await advice as to when it might be done.

Once again, we enjoyed the **Christmas Service** conducted by **Rev John Daysh**, with our enthusiastic singing led by **David Dell and his Take Note Singers.**

In November last year we were again able to host an open afternoon as part of the Wellington Heritage Festival and visits from the Ngaio Garden Group and Wairarapa Pioneers and Settlers Society. The latter, which includes several members descended from Taitā settler families, has given us a **very generous donation of \$1000.** A good number of visitors called in during the Heritage Festival, the majority coming from Wellington City or further afield, demonstrating that the interest in Christ Church as an historic place extends beyond the Hutt Valley.

Our next event is the **Annual Service on Sunday 25 May at 2 pm**, followed by afternoon tea. See the information about our guest speaker, Dr

Rachel Baskerville, in this issue. We look forward to seeing many of you at this gathering when we remember all those connected to our special place, especially the descendants of the pioneer settler families.

Dr Rachel Baskerville - Guest Speaker - speaking about her research into the Buck family, early Taitā settlers.

“Inclined to give annoyance.” - The life and times of Elizabeth and Henry Buck, and Mary-Ann and George Buck.

“On February 19th 1842, the day of their first glimpse of New Zealand, the Surgeon’s diary on the Birman said “several of the immigrants (the two Bucks, Day, Ladbroke, and Mrs Lismore) rather inclined to give an annoyance yesterday saying that there was Suet on board and that they would have it by force etc tho’ there was not an ounce on board that had not been given to them as far as I can learn and believe”. A descendant of Elizabeth Buck, **Rachel Baskerville**, will relate the patchy history of these two brothers and their wives, based around goldfields, a blacksmith’s forge on Molesworth Street, and the Travellers Rest in Taitā .

Our thanks to all who have supported us during recent months and best wishes to you all.

John Stevens, President

A friendly reminder that **yearly subscriptions** are now being gratefully accepted for 2025 - **\$50 p/a**. Thank you to everyone who has already paid.

Also a **big thankyou** to those who have made **generous donations** this year. These extra contributions go a long way towards keeping our beautiful church and grounds looking smart and well cared for as well as providing a buffer for when unexpected expenses pop up.

Visitor Centre News - IT’S A REAL PRIVILEGE to be able to contribute to this newsletter and to convey to you directly what is happening at the **Visitor Centre adjoining the Christ Church in Taita**. The latter is a real heritage taonga, quite literally a hidden treasure because it is a small isolated structure in the middle of a busy industrial area.

COME AND SEE THE GHOST!

Not literally, but with commercial messaging all around us these days, you have to be different to attract attention.....

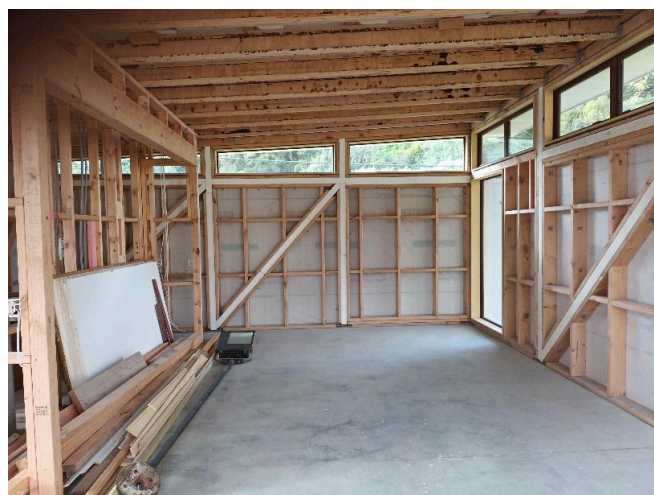
We DO actually have a Ghost of sorts in residence at the Centre, but you have to visit to see it!

A number of supporters of the Preservation Society decided some years ago to establish a Centre, to create a visitor destination to host tourists and students and Spread the Word, and also to offer a display of some of the wonderful stories associated with this extraordinary building, which is a beautiful monument to the courage and persistence of the settlers who built it, and to peace and harmony between peoples. That undertaking has been managed by the **Christ Church Cottage Museum Trust**.



The Anglican Diocese of Wellington, the Hutt City Council, Heritage NZ, The Lotteries Heritage Fund and a number of Charitable Trusts and private individuals, have all commended this initiative and contributed to the cost of the \$370,000 spent to date.

Unfortunately, the 30% increase in the price of building materials over the last 3 or 4 years has meant that the cost of the building has **exceeded original estimates by close to \$100,000**.



This is the state of the building interior on completion a year ago. With volunteer help, progress is steady but slow. **Stephen Hainsworth** from Stokes Valley (pictured) is a heritage enthusiast and a qualified builder, working for us at a much reduced rate. We now have the kitchen up and with your help, hope to have it functioning for the Annual Service of the Preservation Society on May 25 th



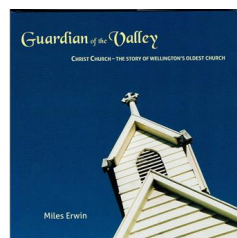
With this in mind, we thought some of you might like to contribute, as others have done, with BUY-A-BRICK to commemorate your family's contribution or acknowledge the passing of a Loved One or Friend, or that of your own Club or Business. This is an example of what it will look like, then set into a path beside the Centre entrance.



If you **deposit \$250** along with your name in our Christ Church Cottage Museum Trust - BNZ ACCOUNT 02-0548-0067223-097 we will contact you for the legend you wish to emboss on your brick.

LOOKING FORWARD TO HEARING FROM YOU

John Terris, CCCMT trustee



Available for sale from Mary Stevens
mhrstevens@gmail.com
"Guardian of the Valley" by **Miles Erwin**. A very enjoyable read about the history of Christ Church, the oldest church in the Wellington region \$30 including postage.

Ashes Wall - A niche in our Ashes Wall costs just \$750.00 plus GST. For further details email: info@christ-church.org.nz.

Christ Church Preservation Society (Inc)
C/- 2/65 Old Karori Road, Karori, Wellington 6012
Phone: 0800 2 TAITA (0800 282 482)
www.christ-church.org.nz
Email: info@christ-church.org.nz